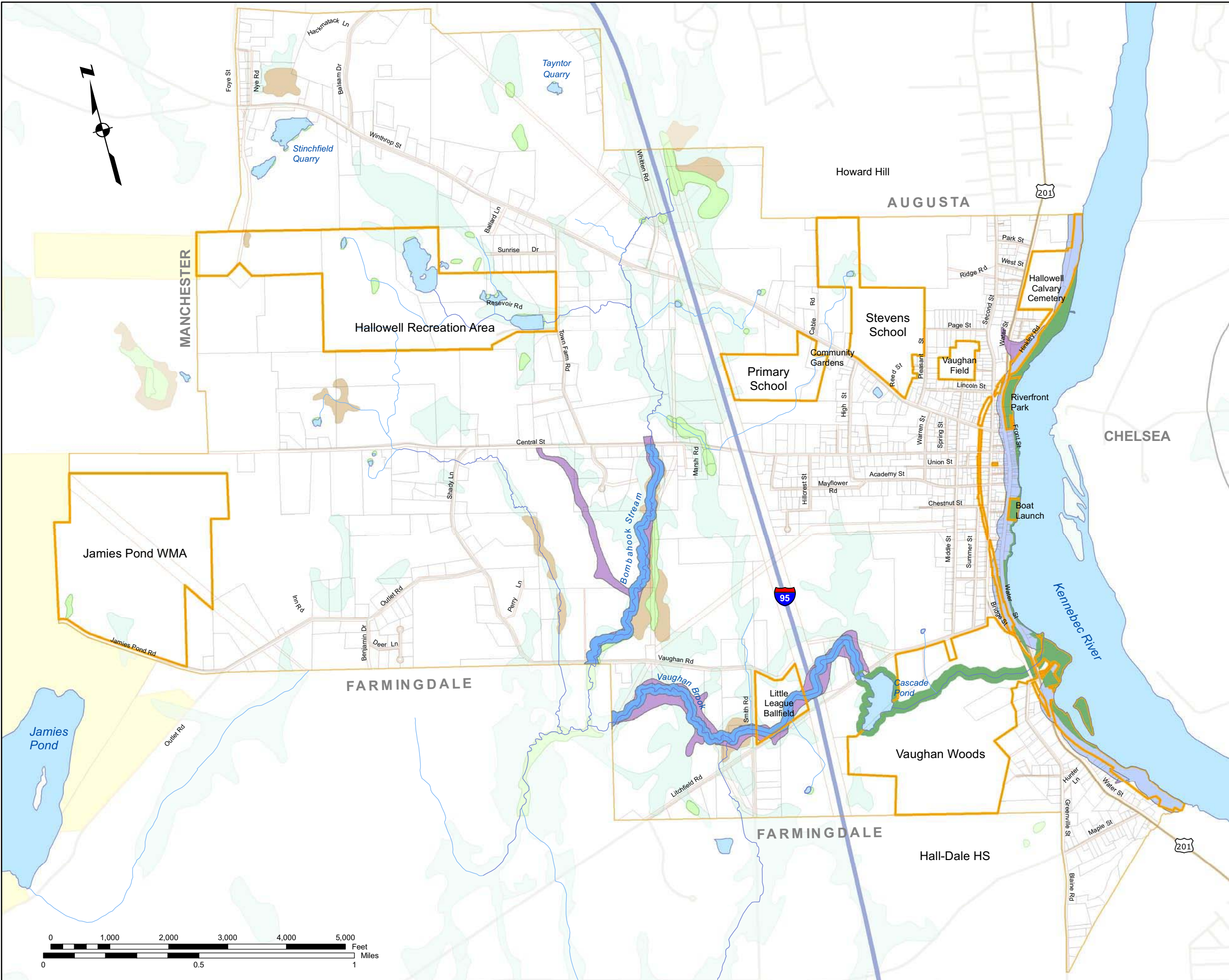


# Existing Resource and Shoreland Protection Zones



**LEGEND**

- Non-forested wetlands
- Forested wetlands
- Hydric soils
- Existing public and private open space
- Public lands in adjacent towns
- FIRM floodplain zone
- 250 foot shoreland zone
- 75 foot stream protection zone
- Resource protection zone

Wetlands from USF&WS National Wetland Inventory maps.

Hydric soils have less than 3 feet depth to water table.

Floodplain zone is based on FEMA Federal Insurance Rate Maps.

